

Singapore International Graduate Award (SINGA)

A unique opportunity to obtain your PhD in Science and Engineering

The Singapore International Graduate Award (SINGA) is a collaboration between the Agency for Science, Technology and Research (A*STAR), the Nanyang Technological University (NTU), the National University of Singapore (NUS) and the Singapore University of Technology and Design (SUTD). PhD training will be carried out in English at your chosen lab at A*STAR research entities, NTU, NUS or SUTD. You will be supervised by distinguished researchers in these labs. Upon successful completion, you will be conferred a PhD degree by NTU, NUS or SUTD.



AREAS OF INTEREST

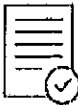
Research areas under the PhD programme fall broadly under two categories:

- a. Biomedical Sciences
- b. Physical Science and Engineering



AWARD

- Full tuition fees support for up to 4 years of PhD studies
- Monthly stipend
- One-time airfare grant of up to S\$1,500 and settling-in allowance of S\$1,000



ELIGIBILITY

- Open to all international graduates with a passion for research and excellent academic results
- Good skills in written and spoken English
- Good reports from academic referees

The above criteria are not exhaustive.



APPLICATION

- To apply, please go to www.a-star.edu.sg/SINGA to access the online application portal.

**SCHOLARSHIPS FOR
SCIENCE AND ENGINEERING
PHD IN SINGAPORE**

APPLY NOW

Agency for Science, Technology and Research (A*STAR)
Singapore International Graduate Award (SINGA)



@SINGAPHD

For any enquiries, email us at singa_enquiries@hq.a-star.edu.sg

SINGAPORE INTERNATIONAL PRE-GRADUATE AWARD (SIPGA)

RESEARCH INTERNSHIP OPPORTUNITIES
FOR MASTERS AND UNDERGRADUATE STUDENTS

Step into one of Asia's most dynamic scientific environments. The Singapore International Pre-Graduate Award (SIPGA) supports top international students for short-term research attachments at A*STAR's research institutes and consortia in biomedical sciences, physical sciences and engineering. Come work alongside world-renowned scientists in A*STAR's vibrant and cosmopolitan labs.



Agency for
Science, Technology
and Research



Prof Sir David Lane
Chair, Education and
Director of IPST Laboratory
A*STAR



Prof Bruno Reversade
Associate Director of Institute
of Medical Biology (IMB)
and Institute of Molecular and
Cell Biology (IMCB), A*STAR



Prof Lisa Ng
Senior Principal Investigator,
Laboratory of Microbial Infections,
Singapore Immunology Network
(SING), A*STAR

SIPGA supports research attachment periods of between two and six months. It is open to international undergraduates and Masters students in the science and engineering disciplines. Attractive stipends will be provided.

Interested students may apply directly to A*STAR Research Institutes. Please submit your CV and transcripts along with your application.

ABOUT SINGAPORE

- Vibrant and cosmopolitan city located in the heart of South-east Asia
- Multi-ethnic population of 5.5 million
- English-speaking environment conducive for work and play
- Dedicated to long-term investments in research, tertiary education and infrastructure



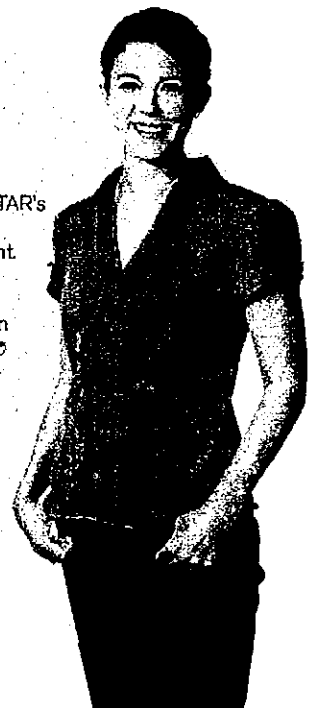
ABOUT AGENCY FOR SCIENCE, TECHNOLOGY & RESEARCH (A*STAR)

- Singapore's leading research agency
- Research and PhD education complemented by its state-of-the-art facilities
- Renowned scientists located at the integrated research campuses – Biopolis for Biomedical Sciences and Fusionopolis for Physical Sciences and Engineering
- Cutting-edge research in a broad spectrum of scientific fields, from molecular biology to microelectronics, materials research, computational biology and advanced manufacturing technology

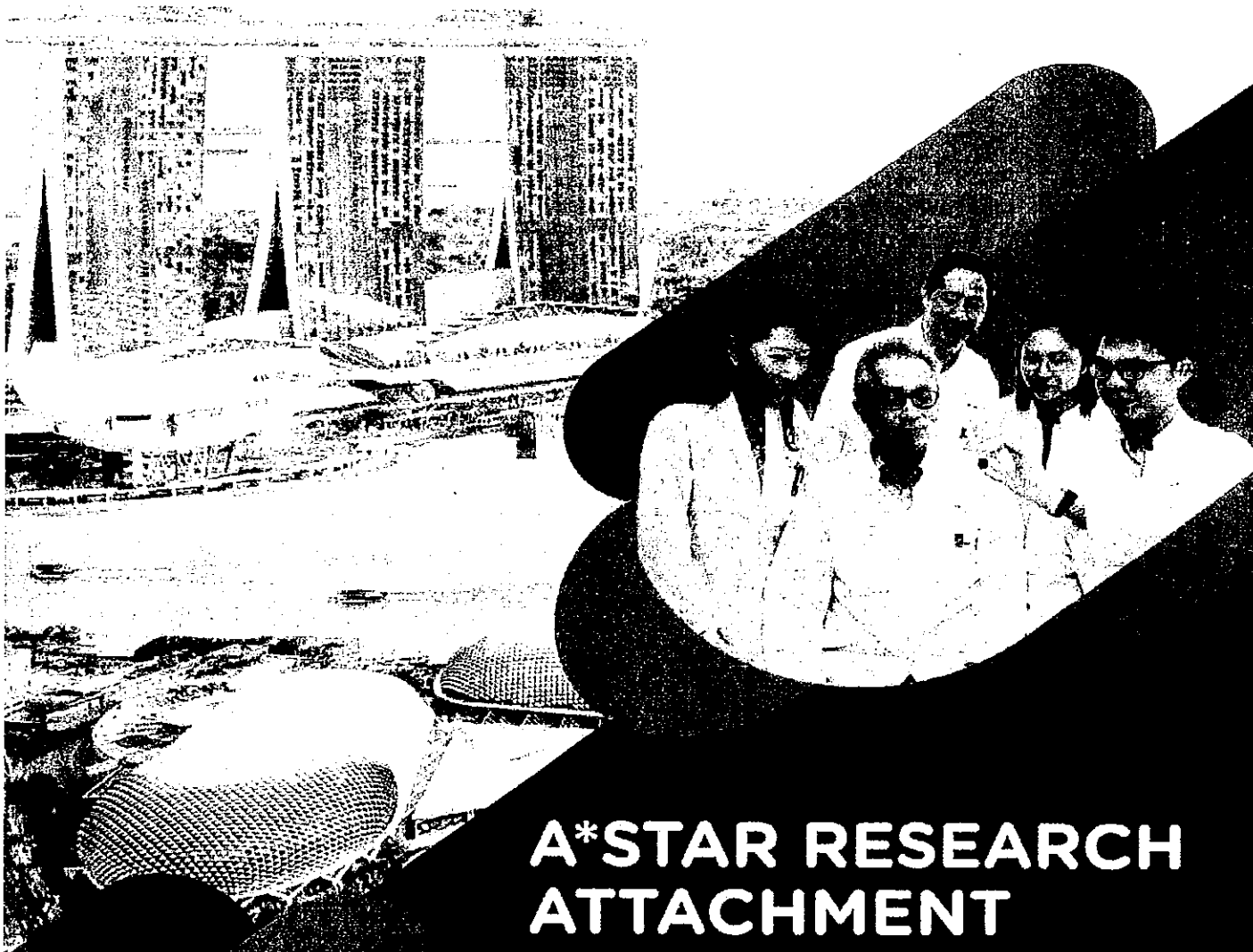


I first came to Singapore under A*STAR's SIPGA programme and had a great time in my lab during that attachment. Having also loved Singapore as a city itself, I realised it was the right choice to apply for SINGA and return to A*STAR to pursue my research."

Daniela Marie Cerny
(Germany)
SIPGA and SINGA awardee
MSc and BSc, Ruprecht-Karls-Universität Heidelberg



For more information, visit www.a-star.edu.sg/sipga
Email: singa_enquiries@hq.a-star.edu.sg



A*STAR RESEARCH ATTACHMENT PROGRAMME

Experience world-class research at an A*STAR research institute in Singapore

The A*STAR Research Attachment Programme (ARAP) supports PhD students to undertake 1 to 2 years of research at an A*STAR research institute in Singapore. Designed to facilitate collaboration between A*STAR and overseas universities, ARAP students will be jointly supervised by a faculty member from the home university and an A*STAR researcher.







ELIGIBILITY CRITERIA

Open to international students with at least a Bachelor's degree with Second Class (Upper) Honours or equivalent, and who have been admitted to a PhD programme.

Students should possess a good track record in research.



Support for attachments of a minimum of 1 year to a maximum of 2 years include:

-  MONTHLY STIPEND OF \$2,500
-  HOUSING SUBSIDY
-  MEDICAL INSURANCE
-  CONFERENCE & TRAINING SUPPORT
-  ONE-TIME AIRFARE GRANT OF \$1,500
-  ONE-TIME SETTLING-IN ALLOWANCE OF \$1,000

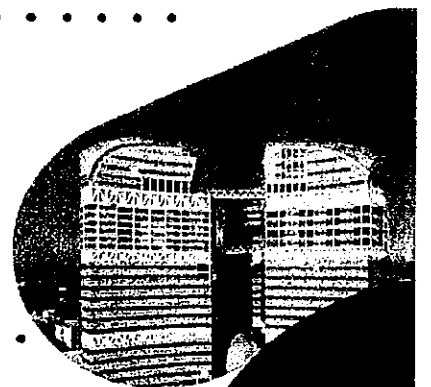
COVERAGE

APPLICATION

ARAP runs throughout the year.



To apply please visit www.a-star.edu.sg/ARAP



A nexus for international R&D collaborations

Located in the heart of Southeast Asia, Singapore is a modern cosmopolitan city-state with a multi-ethnic population of about 6 million. By leveraging science and technology, Singapore is dedicated to developing an internationally vibrant research and innovation hub.

Advancing science and developing innovative technology to further economic growth and improve lives

The Agency for Science, Technology and Research (A*STAR) is Singapore's leading research agency with around 20 research entities at the frontiers of biomedical sciences, physical sciences, engineering, and computing and information science. A*STAR drives mission-oriented research that advances scientific discovery and technological innovations aligned with industry demand.

ABOUT A*STAR

ABOUT SINGAPORE



*The above eligibility criteria are not exhaustive, and may be amended from time to time.

